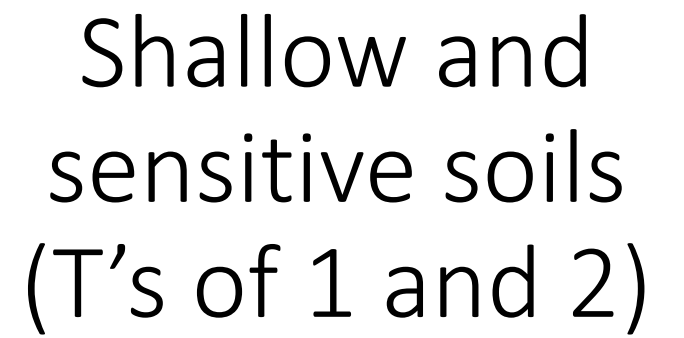




Jeremy &  
Lane Luckey







## Converted cropfield to pasture

- Picked field close to buildings and water
- Put in permanent perimeter fencing
- Seeded down
- Learned how to manage cattle with hotwire fencing







March 29 2022 seeded peas, oats, clover & vetch into last year's sorghum







April 23 finally  
emerged from  
ground (cold  
spring)





# Spring grazing

---



- April 29, 2022

started grazing (picture:  
about the 5<sup>th</sup> day in).

Foreground is peas and  
oats. Far side is rye that  
was planted after 2021  
corn silage










May 11  
planting day-  
corn silage







May 20<sup>th</sup> sprayed off  
and applied 80 units  
of N via 32%

Had applied 3500  
gallons of slurry fall  
of 2021

---







Interseeded June 21 mix of ryegrass, clover, vetch, buckwheat, cowpeas & soybeans







June 26  
interseeding  
coming up



Aug 27  
preharvest

---

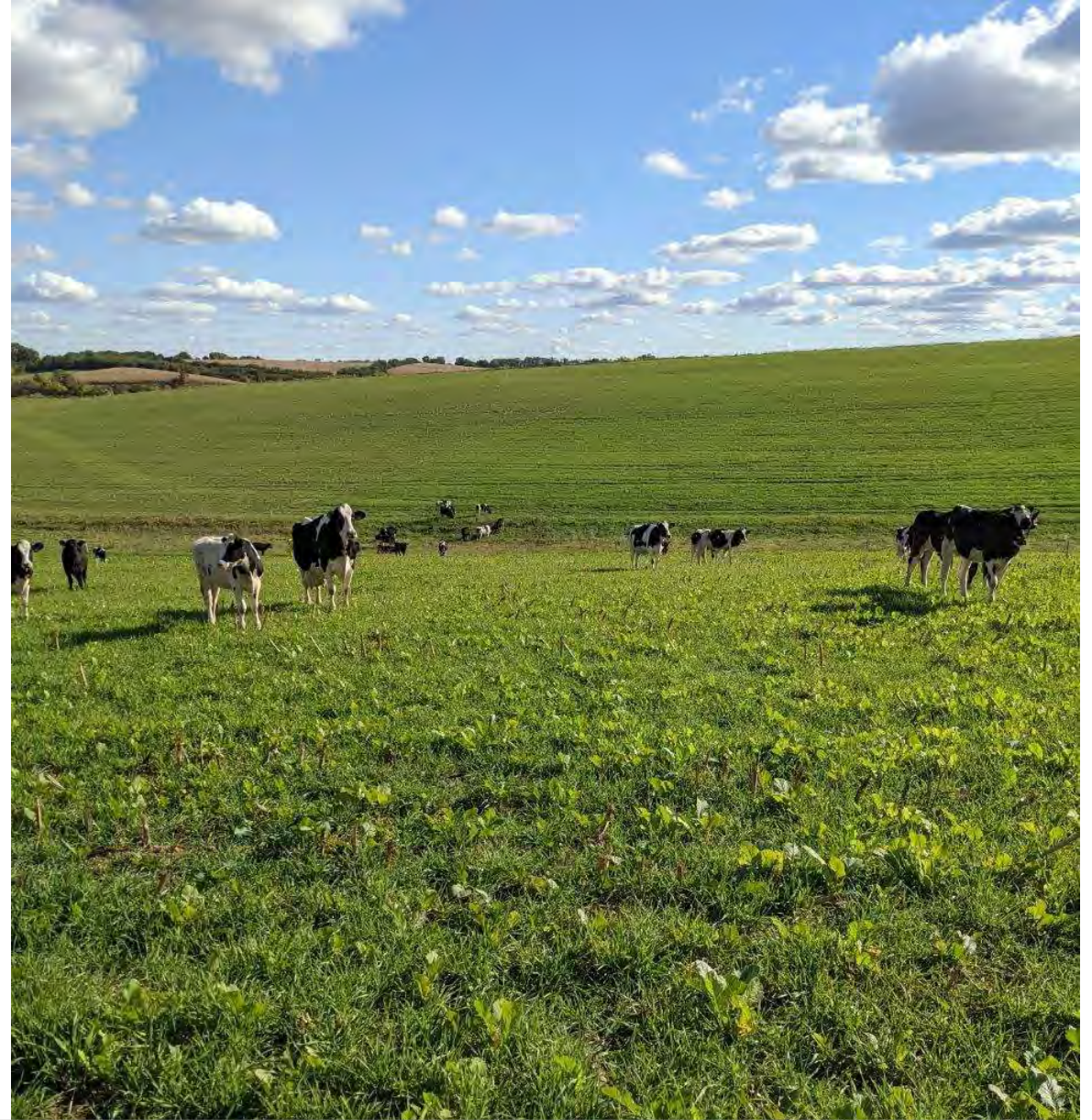






Aug 28<sup>th</sup> planted rye &  
turnips





October 10, 2022 started grazing





- 
- Forage turnip?!







December 8 spread  
manure after cattle off